



California
Gubernatorial Primary 2018
Analysis of the Electorate

Raul Furlong

California Gubernatorial Primary 2018 Analysis of the Electorate

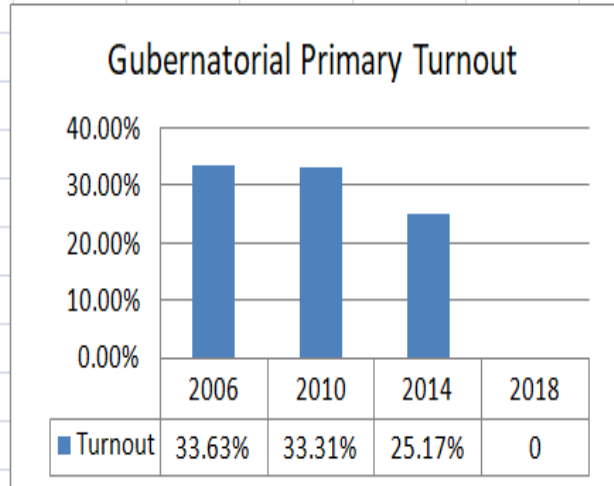
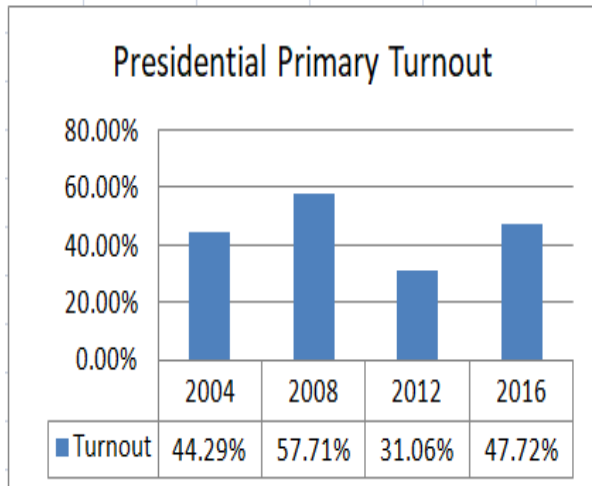
Introduction

Next June 5, 2018, California will hold its quadrennial gubernatorial statewide direct top-two primary election; voters will select new candidates for Governor, Lieutenant Governor, Attorney General, State Controller, State Treasurer, Insurance Commissioner, and its State Superintendent of Public Instruction. In addition to the constitutional offices, the voters will select Judges, U.S. Senate, congressional, state senate, assembly, and candidates for offices from throughout the state. Additionally, there will be state ballot measures dealing with changes to how California will be governed.

This analysis will show a comparison of current voter registration (2017) by age-group and similarly do a comparison of the projected current voter turnout projection based on past historical voting results of previous election returns.

Previous history indicates that presidential primary elections attract more voters than gubernatorial primary campaigns. From the year presidential primary election of 2004 to the gubernatorial primary election of 2014 that has been the case.

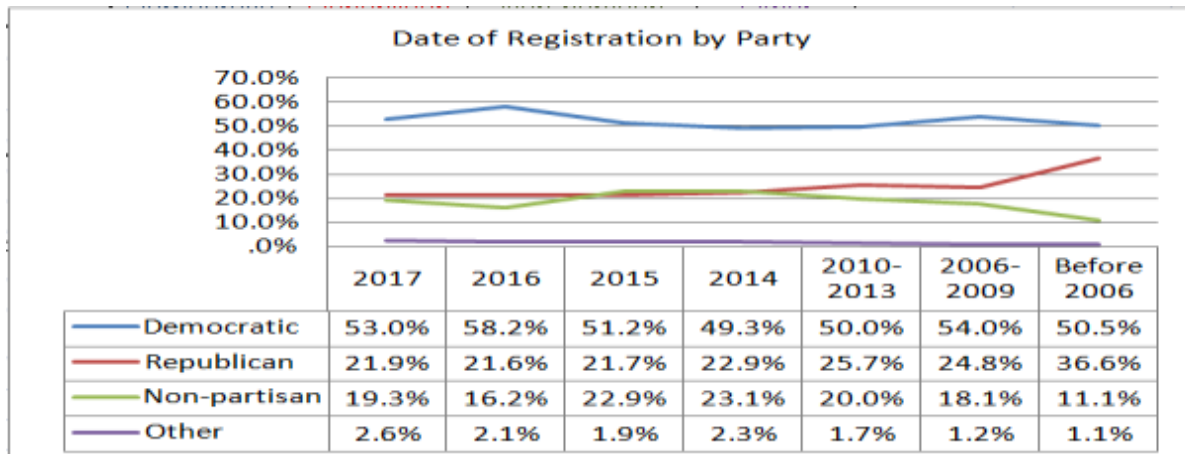
Presidential Primary Registered Voters				Gubernatorial Primary Registered Voters			
	Turnout	Total			Turnout	Total	
2004	44.29%	6684421		2006	33.63%	5269142	
2008	57.71%	9068415		2010	33.31%	5654993	
2012	31.06%	5328296		2014	25.17%	4461346	
2016	47.72%	8546301		2018	????	????????	



The year 2016 saw the largest increase in Democratic voter registration, of 58.2%, that increase totaled almost 1 million additional voters (972,046), not an insignificant amount. The Republican registration rate stayed normal, 21.6%, and the Non-partisan decreased to 16.2%. This change in voter registration is possibly due to voters turning 18 years old, new voters from other places, voters updating registration, or other factors.

The current September 9, 2017 Secretary of State voter’s release list shows Republican registration is slightly larger than the total Democratic voter turnout. That is, number of Democrats who voted **4,297,476**, vs. **4,897,317** Republican who voted and not voted.

During 2017, the Democrats have increased their voter registration to 53%, (234,428 new voters), in relation to the other parties for the same period. So far, Republicans, 21.9%, Non-partisan, 19.3%.and the Other Parties,2.6% . The year is not over, we will have to wait and see what the end of the year shows.

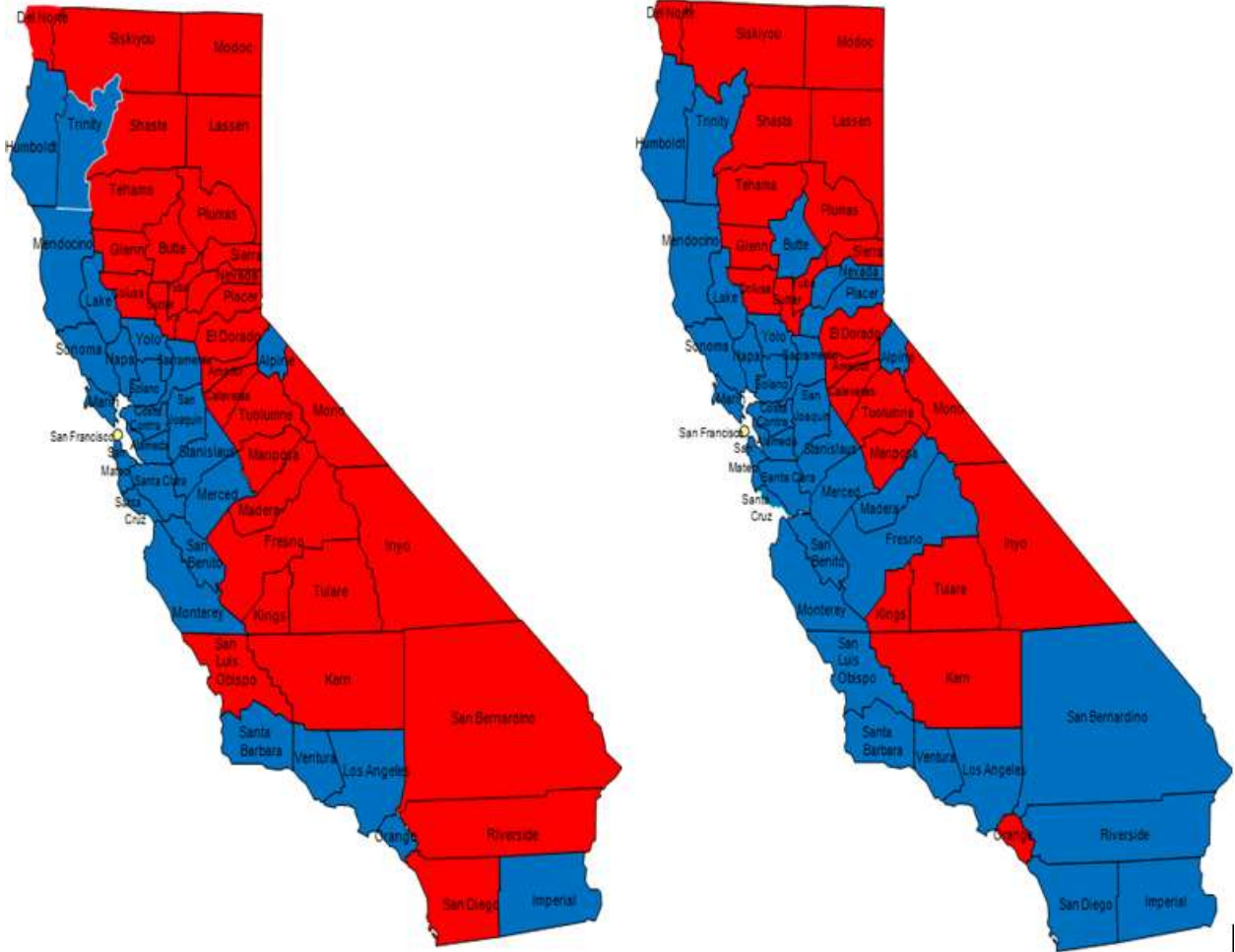


	Date of Registration by Party							
	Democratic	Democratic	Republican	Republican	Non-partisan	Non-partisan	Other	Other
2017	53.0%	234428	21.9%	96797	19.3%	85611	2.6%	11517
2016	58.2%	972046	21.6%	361390	16.2%	271085	2.1%	34247
2015	51.2%	158907	21.7%	67347	22.9%	71205	1.9%	5974
2014	49.3%	174921	22.9%	81068	23.1%	81938	2.3%	8083
2010-2013	50.0%	597502	25.7%	306754	20.0%	238717	1.7%	19823
2006-2009	54.0%	523724	24.8%	240739	18.1%	175617	1.2%	11979
Before 2006	50.5%	1638085	36.6%	1185864	11.1%	359127	1.1%	35324

The maps reflect changes in partisan registration over an eight year period from the 2008 presidential primary to the 2016 presidential primary

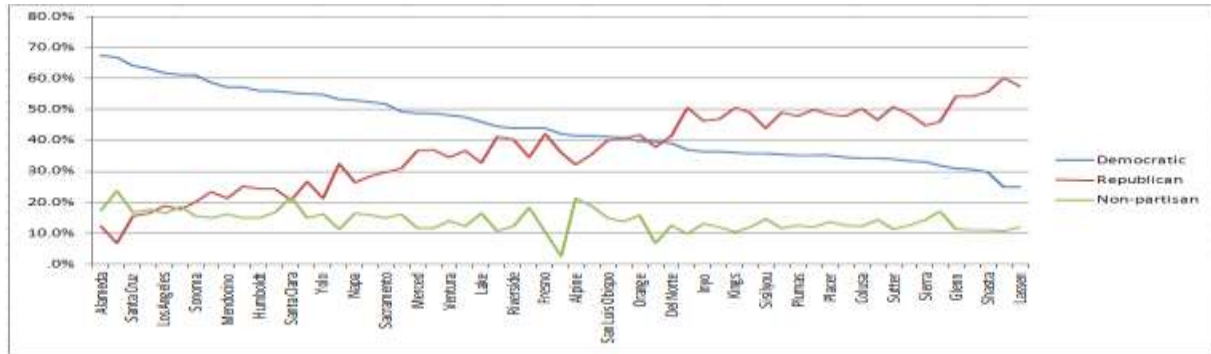
2008 Presidential Primary

2016 Presidential Primary



Voter turnout breakdowns

This Party voter turnout by county, listed by majority Democratic to majority Republican, intersecting in majority Democratic Butte County and majority Republican Orange counties.



NOTE: The counties in the graphs, of this analysis, will not be all visible due to space limitations. However, a panel is provided following each graph with specific county totals.

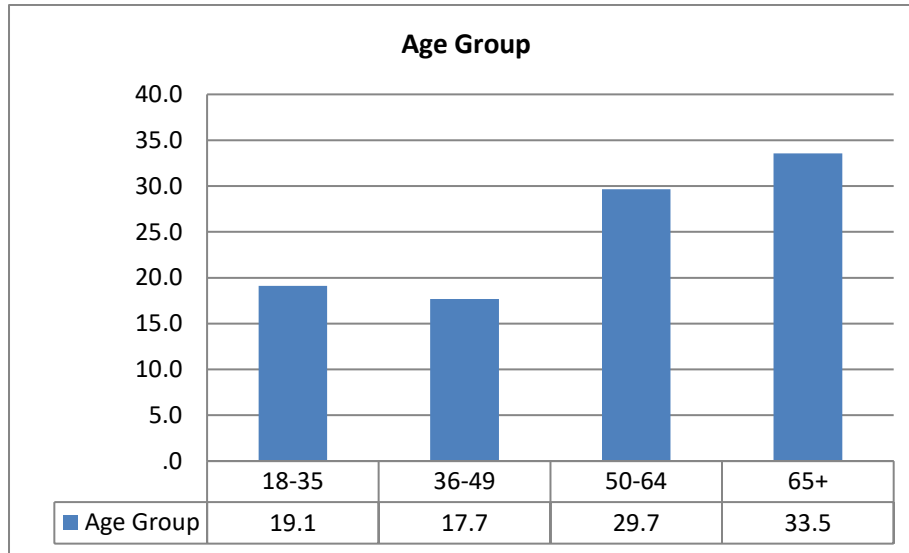
Party voter turnout by county

The Democratic Party leads in registration in 34 counties, while the Republican Party is ahead in 25 counties. Orange county is the last Republican county, on the coast, with a slight lead of 41.8% to 39.8%. Similarly, Butte county holds a small Democratic lead, 41.1% to 40.6% in central California.

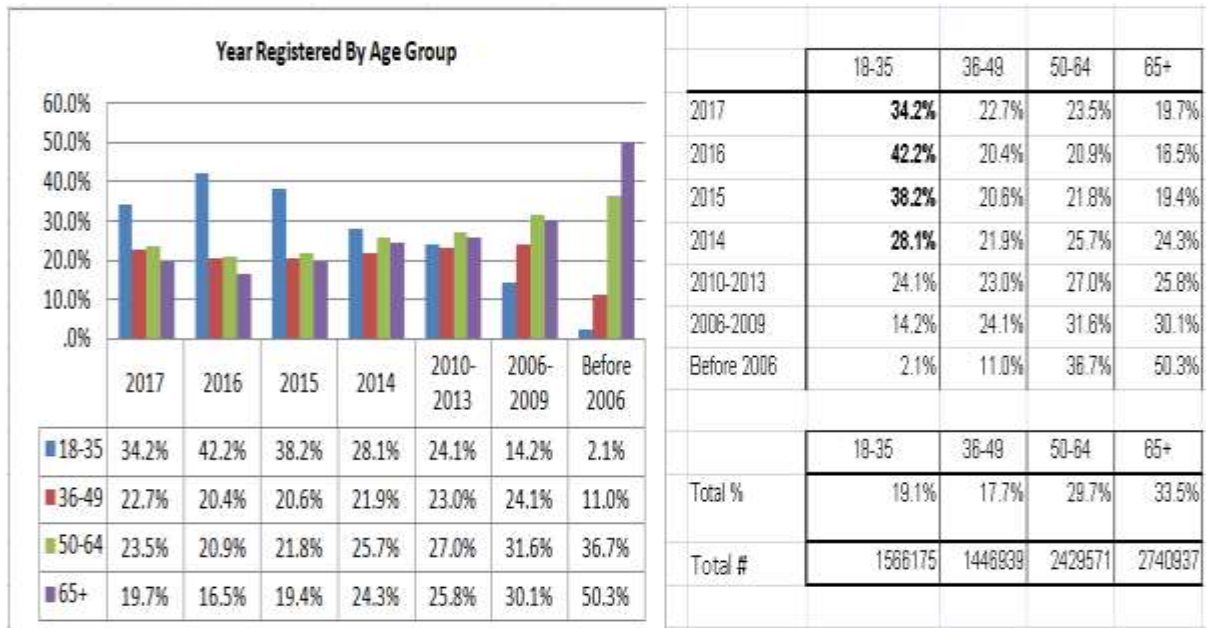
County	Democratic	Republican	Non-partisan	Other	Unknown	County	Democratic	Republican	Non-partisan	Other	Unknown
Alameda	67.7%	12.1%	17.3%	1.8%	1.2%	Orange	39.8%	41.8%	15.7%	1.1%	1.5%
San Francisco	67.0%	6.8%	23.6%	1.7%	1.0%	Trinity	39.8%	37.8%	6.7%	12.1%	3.7%
Santa Cruz	64.4%	15.6%	16.6%	2.1%	1.3%	Del Norte	39.2%	41.5%	12.3%	2.1%	4.9%
Marin	63.5%	16.3%	17.5%	1.5%	1.3%	Tulare	37.2%	50.5%	9.6%	.8%	1.9%
Los Angeles	61.8%	18.8%	15.2%	1.6%	1.5%	Inyo	36.5%	46.4%	12.9%	1.8%	2.4%
San Mateo	61.3%	17.0%	18.4%	1.2%	1.4%	Tuolumne	36.5%	46.9%	11.7%	1.3%	3.7%
Sonoma	61.2%	20.0%	15.5%	1.9%	1.4%	Kings	36.2%	50.6%	10.2%	.9%	2.0%
Contra Costa	58.9%	23.5%	14.0%	1.2%	1.6%	Madera	36.0%	49.0%	11.0%	1.2%	2.0%
Mendocino	57.5%	21.3%	16.0%	2.8%	2.4%	Sierraville	35.9%	43.9%	14.6%	1.9%	3.7%
Monterey	57.3%	25.2%	14.8%	1.1%	1.6%	Amador	35.5%	48.9%	11.4%	1.4%	2.7%
Humboldt	56.3%	24.3%	14.9%	2.8%	1.7%	Plumas	35.3%	47.9%	12.3%	1.3%	3.2%
Imperial	56.3%	24.2%	16.7%	1.2%	1.6%	Kern	35.2%	49.8%	11.8%	.9%	2.3%
Santa Clara	55.5%	20.7%	21.4%	1.1%	1.3%	Placer	35.2%	48.4%	13.6%	1.4%	1.5%
Solano	55.2%	26.7%	14.8%	1.4%	2.0%	Calaveras	34.7%	47.7%	12.4%	2.0%	3.2%
Yolo	55.0%	21.1%	16.0%	1.6%	6.4%	Colusa	34.5%	50.4%	12.0%	1.0%	2.1%
San Benito	53.6%	32.4%	11.1%	.9%	2.0%	El Colorado	34.5%	46.5%	14.3%	2.1%	2.7%
Napa	53.2%	26.5%	16.4%	1.8%	2.1%	Sutter	34.1%	50.9%	11.3%	1.8%	2.0%
Sacramento	52.5%	28.6%	15.7%	1.5%	1.7%	Mariposa	33.6%	48.6%	12.4%	2.6%	2.8%
Sacramento	52.0%	29.8%	14.8%	1.4%	2.0%	Sierra	33.1%	44.7%	14.3%	3.8%	4.1%
Santa Barbara	49.7%	31.1%	16.1%	1.7%	1.5%	Yuba	31.9%	46.1%	16.8%	1.6%	3.5%
Merced	48.9%	36.5%	11.5%	.9%	2.2%	Glenn	31.0%	54.1%	11.1%	1.1%	2.6%
San Joaquin	48.8%	36.9%	11.5%	1.1%	1.8%	Tehama	30.8%	54.0%	10.8%	1.3%	3.1%
Ventura	48.2%	34.6%	13.9%	2.0%	1.3%	Shasta	30.0%	55.6%	10.9%	1.2%	2.4%
San Bernardino	47.7%	36.8%	12.1%	1.2%	2.2%	Modoc	25.1%	60.2%	10.6%	.8%	3.3%
Lake	46.3%	32.9%	16.3%	2.1%	2.5%	Lassen	25.0%	57.5%	11.8%	1.5%	4.1%
Stanislaus	44.0%	41.1%	10.6%	1.5%	1.9%						
Riverside	44.2%	40.4%	12.2%	1.2%	2.0%						
San Diego	44.0%	34.6%	19.0%	1.2%	2.1%						
Fresno	44.0%	42.2%	10.3%	1.7%	1.9%						
Nevada	42.2%	36.1%	2.4%	16.8%	2.5%						
Alpine	41.0%	32.2%	21.0%	2.6%	2.4%						
Mono	41.7%	35.6%	19.8%	1.3%	2.6%						
San Luis Obispo	41.2%	40.0%	14.7%	2.2%	1.9%						
Butte	41.1%	40.6%	13.5%	2.5%	2.2%						

The Main Age Groups

The age group chart reflects the total of active voters that participated in the 2016 primary and the newly registered voters from 2017, in their respective age groups.



This chart reflects the year that current voters registered to vote, by age group. While it's normal to see the 16-35 age group experience an increase in registration every year, the 42.2% increase in registration for 2016 for the 18-35 age group was a larger rate of growth than in previous years.

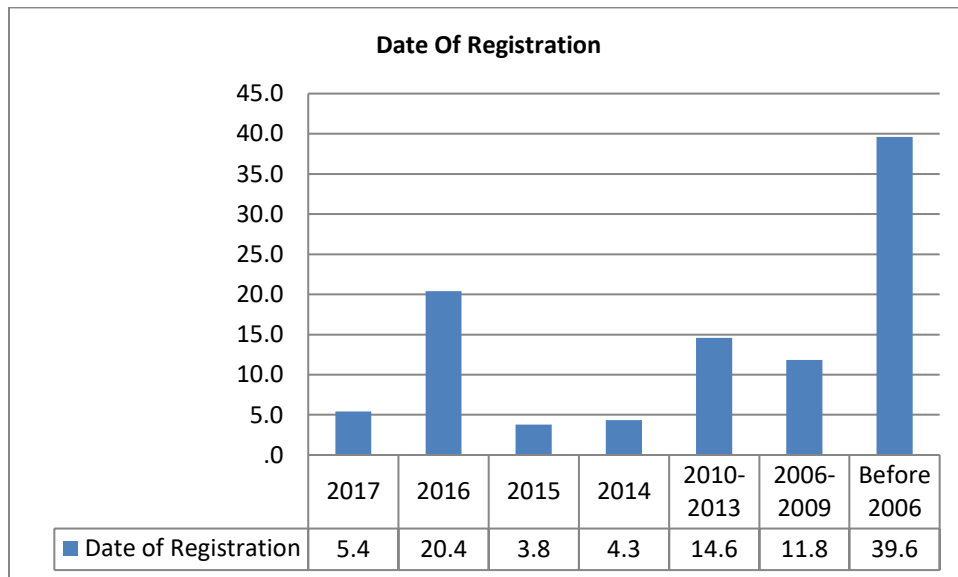


Historical Voter Registration By Year

The registration numbers shown in this graph represent the total number of registered voters in percentages reflecting the year they registered to vote, as recorded by the counties.

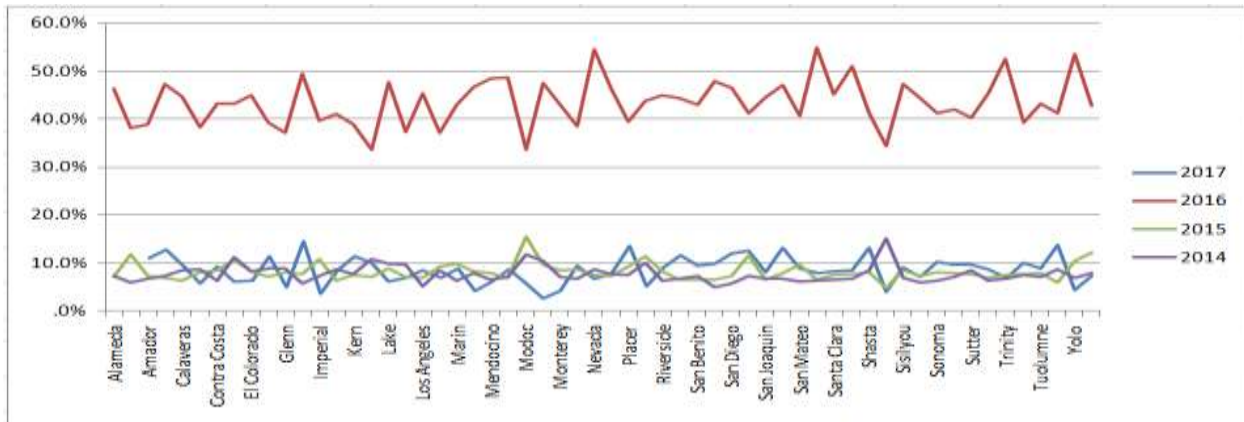
There are many reasons why voters request changes, as the data will show, the number of voters of all ages and every county that changed registration exceeded previous elections. In many counties, like Santa Barbara, the rate was 54.8%, and there were many more. Even Los Angeles, the largest county in California, had a rate of 45.3%

As the data will show, there were a large number of changes for each age-group, the 16-35 was definitely the largest, and the 65+ had the smallest.



The 2016 registration rate for the 18-34 age group was the largest for the year. As the data shows, in previous years the registration rate varied some, but 2016 broke the pattern.

2016 Voting Registration For 18-34Year Old-Group

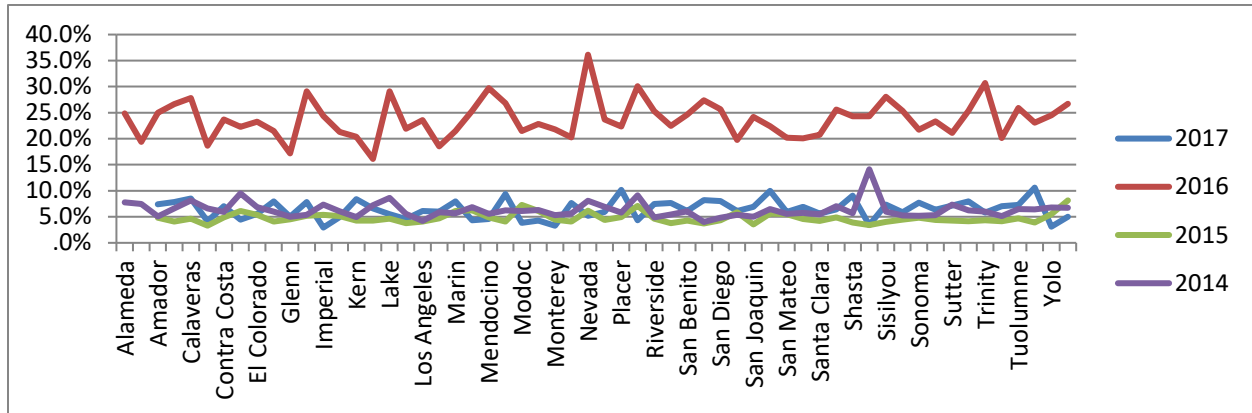


NOTE: The counties in the graphs, of this analysis, will not be all visible due to space limitations. However, a panel is provided following each graph with specific county totals.

	2017	2016	2015	2014		2017	2016	2015	2014
Alameda	13.9%	46.3%	7.1%	7.3%	Orange	7.7%	46.3%	7.4%	7.8%
Alpine		38.2%	11.8%	5.9%	Placer	13.4%	39.4%	9.3%	7.5%
Amador	11.0%	39.0%	7.3%	6.8%	Plumas	5.2%	43.7%	11.5%	10.2%
Butte	12.8%	47.3%	7.0%	7.4%	Riverside	9.0%	44.9%	8.4%	6.3%
Calaveras	9.5%	44.8%	6.4%	8.6%	Sacramento	11.6%	44.3%	6.6%	6.8%
Colusa	5.7%	38.3%	8.1%	8.7%	San Benito	9.5%	43.0%	6.6%	7.2%
Contra Costa	9.3%	43.2%	8.6%	6.4%	San Bernadino	9.8%	47.8%	6.5%	5.0%
Del Norte	6.1%	43.3%	10.6%	11.3%	San Diego	12.0%	46.4%	7.4%	5.8%
El Colorado	6.3%	44.9%	8.3%	8.3%	San Francisco	12.6%	41.3%	11.7%	7.4%
Fresno	11.3%	39.4%	7.2%	8.8%	San Joaquin	8.1%	44.5%	6.6%	6.7%
Glenn	4.9%	37.2%	8.2%	8.9%	San Luis Obispo	13.0%	47.1%	7.9%	6.7%
Humboldt	14.4%	49.5%	7.7%	5.8%	San Mateo	8.8%	40.6%	9.6%	6.1%
Imperial	3.6%	39.7%	10.9%	7.3%	Santa Barbara	7.9%	54.8%	6.6%	6.3%
Inyo	8.5%	41.0%	6.3%	8.7%	Santa Clara	8.3%	45.0%	7.5%	6.5%
Kern	11.3%	39.0%	7.5%	7.8%	Santa Cruz	8.4%	51.0%	7.7%	6.6%
Kings	9.9%	33.7%	7.2%	10.9%	Shasta	13.1%	41.2%	8.2%	8.5%
Lake	6.2%	47.6%	8.9%	9.9%	Sierra	4.0%	34.4%	4.8%	15.2%
Lassen	6.9%	37.5%	7.2%	9.7%	Sisilyou	8.9%	47.3%	8.5%	7.0%
Los Angeles	8.4%	45.3%	7.0%	5.1%	Solano	7.2%	44.3%	7.3%	6.0%
Madera	6.9%	37.1%	9.2%	8.5%	Sonoma	10.2%	41.2%	8.1%	6.4%
Marin	8.8%	43.0%	9.8%	6.3%	Stanislaus	9.7%	42.1%	7.9%	7.2%
Mariposa	4.1%	46.7%	8.3%	7.9%	Sutter	9.7%	40.4%	7.6%	8.5%
Mendocino	6.1%	48.4%	7.9%	6.5%	Tehama	8.6%	45.3%	7.0%	6.3%
Merced	8.7%	48.6%	6.9%	7.1%	Trinity	6.9%	52.5%	7.5%	6.7%
Modoc	5.7%	33.7%	15.5%	11.9%	Tulare	10.0%	39.2%	7.6%	7.4%
Mono	2.7%	47.4%	9.7%	10.5%	Tuolumne	8.8%	43.1%	8.0%	7.2%
Monterey	4.2%	42.9%	8.5%	7.1%	Ventura	13.8%	41.3%	6.0%	8.6%
Napa	9.4%	38.6%	8.7%	6.7%	Yolo	4.5%	53.5%	10.4%	7.0%
Nevada	6.7%	54.5%	7.5%	8.7%	Yuba	7.3%	42.7%	12.2%	8.0%

The 35-49 age-groups 2016 registration rate was the second largest for the year. As the data shows, in previous years the registration rate did not change much.

2016 Voting Registration For 35-49 Year Old-Group

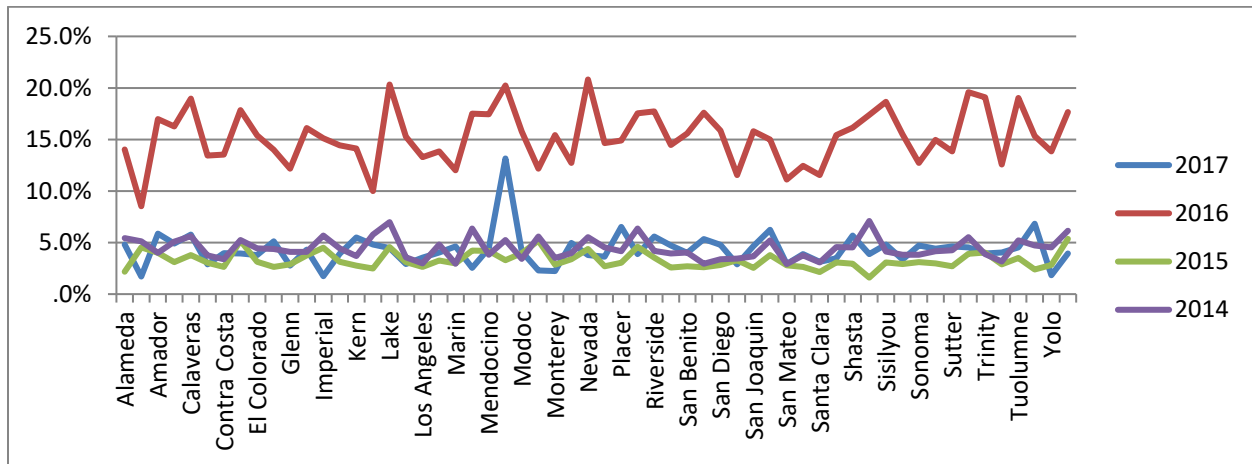


NOTE: The counties in the graphs, of this analysis, will not be all visible due to space limitations. However, a panel is provided following each graph with specific county totals.

	2017	2016	2015	2014		2017	2016	2015	2014
Alameda	8.5%	24.9%	4.4%	7.8%	Orange	5.9%	23.7%	4.4%	6.9%
Alpine		19.4%		7.5%	Placer	10.2%	22.4%	4.9%	5.8%
Amador	7.4%	25.0%	4.8%	5.1%	Plumas	4.3%	30.1%	7.1%	9.1%
Butte	7.8%	26.6%	4.1%	6.6%	Riverside	7.5%	25.3%	4.6%	4.9%
Calaveras	8.5%	27.8%	4.6%	8.1%	Sacramento	7.6%	22.5%	3.8%	5.4%
Colusa	4.1%	18.7%	3.3%	6.6%	San Benito	6.1%	24.6%	4.3%	6.0%
Contra Costa	7.1%	23.7%	4.9%	5.9%	San Bernadino	8.2%	27.4%	3.7%	4.0%
Del Norte	4.5%	22.3%	6.1%	9.5%	San Diego	8.0%	25.7%	4.4%	4.8%
El Colorado	5.5%	23.3%	5.4%	6.9%	San Francisco	6.1%	19.8%	5.8%	5.4%
Fresno	7.9%	21.5%	4.1%	6.0%	San Joaquin	6.9%	24.2%	3.5%	5.0%
Glenn	5.0%	17.2%	4.5%	5.0%	San Luis Obispo	10.0%	22.4%	5.6%	6.5%
Humboldt	7.9%	29.1%	5.2%	5.4%	San Mateo	5.9%	20.2%	5.5%	5.6%
Imperial	2.9%	24.4%	5.3%	7.3%	Santa Barbara	6.9%	20.1%	4.6%	5.7%
Inyo	5.0%	21.3%	5.1%	6.0%	Santa Clara	5.6%	20.7%	4.2%	5.5%
Kern	8.4%	20.4%	4.3%	5.0%	Santa Cruz	6.4%	25.6%	4.9%	7.0%
Kings	6.6%	16.1%	4.3%	7.2%	Shasta	9.1%	24.3%	3.9%	5.7%
Lake	5.5%	29.1%	4.6%	8.7%	Sierra	3.4%	24.3%	3.4%	14.1%
Lassen	4.6%	21.9%	3.8%	5.6%	Sisilyou	7.4%	28.1%	4.0%	6.0%
Los Angeles	6.1%	23.6%	4.1%	4.2%	Solano	5.9%	25.4%	4.5%	5.2%
Madera	6.0%	18.5%	4.7%	5.9%	Sonoma	7.7%	21.7%	4.8%	5.2%
Marin	8.0%	21.5%	6.1%	5.7%	Stanislaus	6.4%	23.3%	4.4%	5.3%
Mariposa	4.4%	25.3%	6.2%	6.8%	Sutter	7.2%	21.1%	4.3%	7.3%
Mendocino	4.6%	29.7%	4.9%	5.5%	Tehama	8.0%	25.4%	4.1%	6.2%
Merced	9.4%	26.8%	4.1%	6.2%	Trinity	5.8%	30.7%	4.4%	6.0%
Modoc	3.8%	21.5%	7.3%	6.1%	Tulare	7.0%	20.1%	4.1%	5.1%
Mono	4.3%	22.8%	6.1%	6.3%	Tuolumne	7.3%	25.9%	4.7%	6.5%
Monterey	3.3%	21.8%	4.5%	5.3%	Ventura	10.6%	23.1%	3.9%	6.4%
Napa	7.6%	20.3%	4.1%	5.7%	Yolo	3.1%	24.5%	5.5%	6.8%
Nevada	5.2%	36.1%	6.2%	8.1%	Yuba	5.0%	26.7%	8.2%	6.7%

The 50-64 agegroups 2016 registration rate was the third largest for the year. As the data shows, in previous years the registration rate did not change much. Although Merced County 2017' (blue line) projection of 13.2% change in registration shows promise.

2016 Voting Registration For 50-64 Year Old-Group

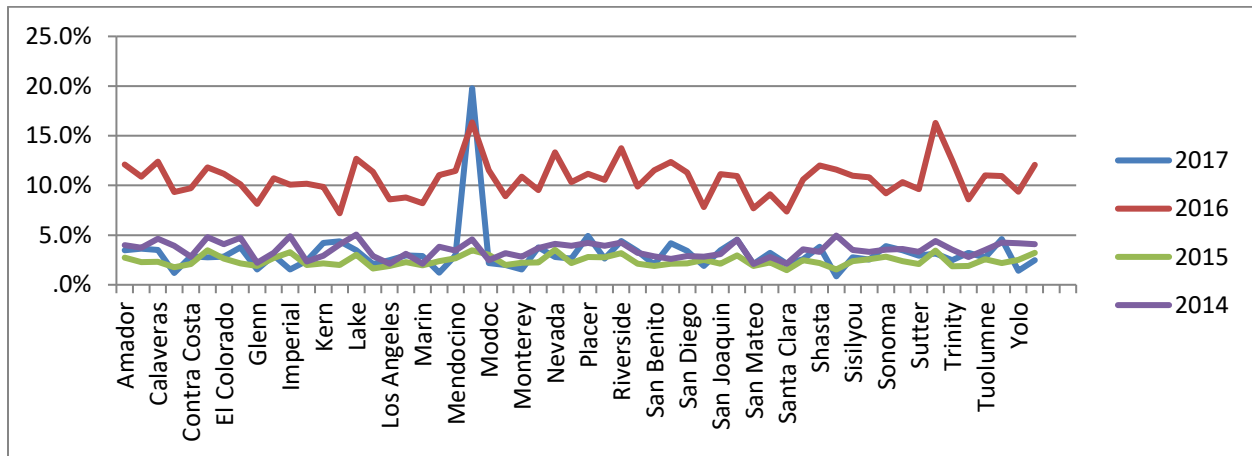


NOTE: The counties in the graphs, of this analysis, will not be all visible due to space limitations. However, a panel is provided following each graph with specific county totals.

	2017	2016	2015	2014		2017	2016	2015	2014
Alameda	4.8%	14.0%	2.2%	5.4%	Orange	3.6%	14.6%	2.7%	4.5%
Alpine	1.7%	8.5%	4.5%	5.1%	Placer	6.5%	14.9%	3.0%	4.1%
Amador	5.9%	17.0%	4.0%	4.0%	Plumas	3.9%	17.5%	4.6%	6.4%
Butte	4.9%	16.3%	3.1%	5.1%	Riverside	5.6%	17.7%	3.5%	4.2%
Calaveras	5.8%	19.0%	3.8%	5.6%	Sacramento	4.7%	14.4%	2.6%	3.9%
Colusa	2.9%	13.4%	3.1%	3.7%	San Benito	4.0%	15.6%	2.7%	4.0%
Contra Costa	4.0%	13.5%	2.6%	3.4%	San Bernadino	5.3%	17.6%	2.6%	3.0%
Del Norte	3.9%	17.9%	5.2%	5.2%	San Diego	4.8%	15.9%	2.8%	3.4%
El Colorado	3.8%	15.4%	3.1%	4.4%	San Francisco	2.9%	11.5%	3.3%	3.4%
Fresno	5.1%	14.0%	2.6%	4.4%	San Joaquin	4.7%	15.8%	2.5%	3.7%
Glenn	2.8%	12.2%	2.9%	4.1%	San Luis Obispo	6.2%	15.0%	3.8%	5.2%
Humboldt	4.3%	16.1%	3.8%	4.1%	San Mateo	2.9%	11.1%	2.8%	2.9%
Imperial	1.8%	15.1%	4.5%	5.7%	Santa Barbara	3.9%	12.5%	2.6%	3.8%
Inyo	3.9%	14.4%	3.1%	4.4%	Santa Clara	3.1%	11.6%	2.1%	3.1%
Kern	5.5%	14.1%	2.8%	3.7%	Santa Cruz	3.5%	15.4%	3.1%	4.6%
Kings	4.8%	10.0%	2.5%	5.8%	Shasta	5.7%	16.1%	2.9%	4.5%
Lake	4.5%	20.3%	4.6%	7.0%	Sierra	3.9%	17.4%	1.6%	7.1%
Lassen	2.9%	15.3%	3.1%	3.6%	Siskiyou	4.8%	18.7%	3.1%	4.1%
Los Angeles	3.5%	13.3%	2.6%	3.0%	Solano	3.3%	15.5%	2.9%	3.8%
Madera	4.0%	13.8%	3.3%	4.8%	Sonoma	4.7%	12.7%	3.1%	3.8%
Marin	4.6%	12.0%	3.0%	2.9%	Stanislaus	4.4%	15.0%	3.0%	4.2%
Mariposa	2.5%	17.5%	4.2%	6.4%	Sutter	4.6%	13.9%	2.7%	4.3%
Mendocino	4.4%	17.4%	4.2%	3.8%	Tehama	4.5%	19.6%	3.9%	5.5%
Merced	13.2%	20.2%	3.3%	5.2%	Trinity	4.0%	19.1%	4.0%	3.9%
Modoc	4.1%	15.8%	4.0%	3.4%	Tulare	4.0%	12.6%	2.9%	3.2%
Mono	2.3%	12.2%	5.2%	5.6%	Tuolumne	4.5%	19.0%	3.5%	5.2%
Monterey	2.2%	15.4%	2.9%	3.5%	Ventura	6.8%	15.3%	2.4%	4.7%
Napa	5.0%	12.7%	3.4%	4.0%	Yolo	1.8%	13.8%	2.8%	4.5%
Nevada	3.8%	20.8%	4.4%	5.5%	Yuba	3.9%	17.7%	5.4%	6.1%

The 65 and older age groups 2016 registration rate was the smallest for the year. As the data shows, in previous years the registration rate did not change much. Again, Merced County 2017's projection of a 19.8% increase in registration, shows promise.

2016 Voting Registration For 65+ Year Old-Group

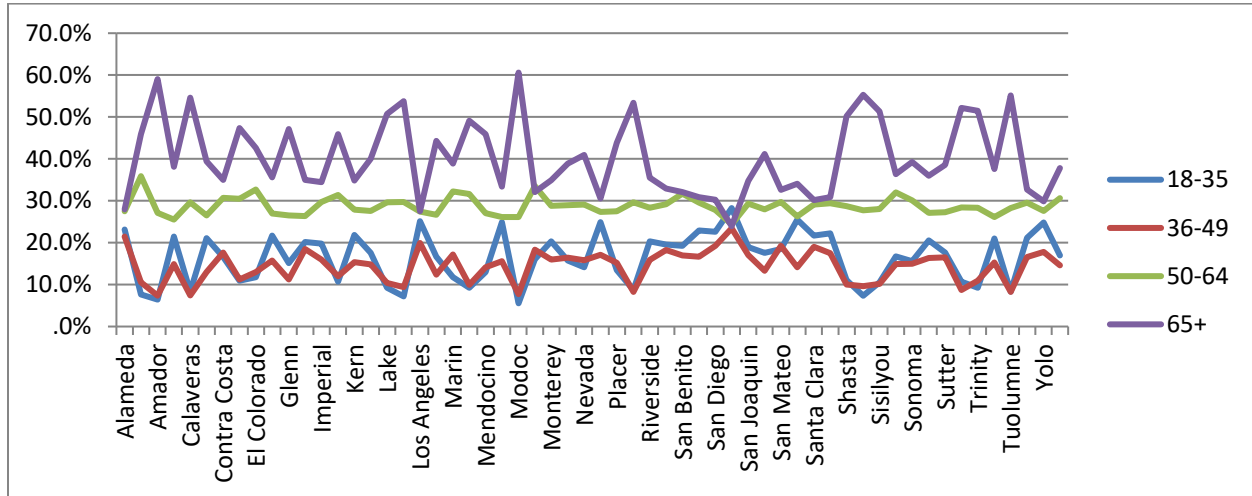


NOTE: The counties in the graphs, of this analysis, will not be all visible due to space limitations. However, a panel is provided following each graph with specific county totals.

	2017	2016	2015	2014		2017	2016	2015	2014
Alameda	3.3%	9.5%	1.7%	4.4%	Orange	2.6%	10.3%	2.2%	3.9%
Alpine	.4%	10.8%		4.9%	Placer	4.9%	11.2%	2.8%	4.2%
Amador	3.5%	12.1%	2.7%	4.0%	Plumas	2.6%	10.6%	2.8%	3.9%
Butte	3.6%	10.9%	2.3%	3.7%	Riverside	4.4%	13.7%	3.2%	4.2%
Calaveras	3.5%	12.4%	2.3%	4.6%	Sacramento	3.4%	9.9%	2.1%	3.2%
Colusa	1.2%	9.3%	1.8%	3.9%	San Benito	2.0%	11.5%	1.9%	2.9%
Contra Costa	2.9%	9.7%	2.1%	2.8%	San Bernadino	4.2%	12.4%	2.1%	2.6%
Del Norte	2.8%	11.8%	3.5%	4.8%	San Diego	3.4%	11.3%	2.2%	2.9%
El Colorado	2.8%	11.2%	2.6%	4.1%	San Francisco	1.9%	7.8%	2.5%	2.8%
Fresno	3.8%	10.1%	2.1%	4.7%	San Joaquin	3.5%	11.2%	2.1%	3.1%
Glenn	1.5%	8.1%	1.9%	2.2%	San Luis Obispo	4.5%	10.9%	3.0%	4.5%
Humboldt	2.9%	10.7%	2.7%	3.2%	San Mateo	2.1%	7.7%	1.9%	2.1%
Imperial	1.5%	10.1%	3.3%	4.9%	Santa Barbara	3.2%	9.1%	2.2%	2.8%
Inyo	2.4%	10.2%	2.0%	2.4%	Santa Clara	2.1%	7.4%	1.5%	2.1%
Kern	4.2%	9.9%	2.2%	2.9%	Santa Cruz	2.6%	10.6%	2.5%	3.6%
Kings	4.4%	7.2%	2.0%	4.0%	Shasta	3.8%	12.0%	2.2%	3.3%
Lake	3.5%	12.7%	3.0%	5.1%	Sierra	.8%	11.6%	1.6%	5.0%
Lassen	2.1%	11.4%	1.6%	2.9%	Sisilyou	2.8%	11.0%	2.4%	3.5%
Los Angeles	2.5%	8.6%	1.9%	2.1%	Solano	2.5%	10.8%	2.6%	3.3%
Madera	2.9%	8.8%	2.3%	3.1%	Sonoma	3.9%	9.2%	2.8%	3.5%
Marin	2.9%	8.2%	2.0%	2.1%	Stanislaus	3.5%	10.3%	2.4%	3.6%
Mariposa	1.2%	11.0%	2.4%	3.8%	Sutter	2.9%	9.6%	2.1%	3.3%
Mendocino	3.0%	11.5%	2.7%	3.4%	Tehama	3.2%	16.3%	3.4%	4.4%
Merced	19.8%	16.3%	3.5%	4.6%	Trinity	2.5%	12.5%	1.9%	3.5%
Modoc	2.2%	11.5%	3.0%	2.5%	Tulare	3.2%	8.6%	1.9%	2.8%
Mono	2.0%	8.9%	2.0%	3.2%	Tuolumne	2.7%	11.0%	2.6%	3.5%
Monterey	1.5%	10.9%	2.2%	2.8%	Ventura	4.6%	11.0%	2.2%	4.3%
Napa	3.8%	9.5%	2.3%	3.7%	Yolo	1.4%	9.4%	2.5%	4.2%
Nevada	2.8%	13.3%	3.5%	4.1%	Yuba	2.5%	12.1%	3.2%	4.1%

As we showed in the voter registration data, registration rates decreased as the voter got older. The younger voter registered at a higher rate than the older voter. The voter turnout rate shows the inverse, the turnout rate increases as the voter gets older. However the turnout rate has a gap between the 50 to 65+ and the 18-49 groups.

2016 Voting Participation Rate For Democrats

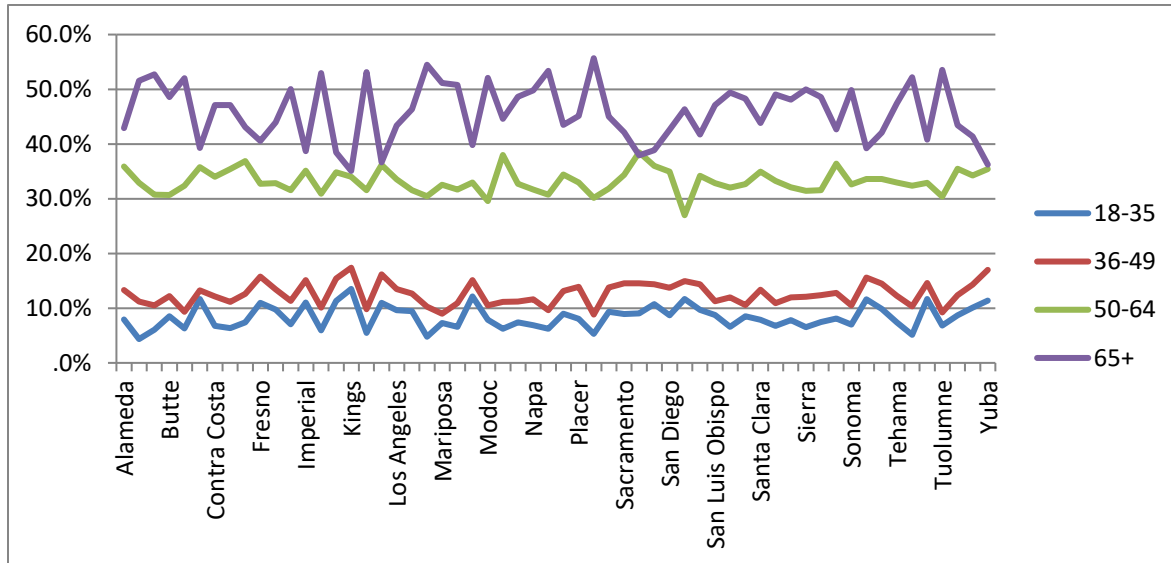


NOTE: The counties in the graphs, of this analysis, will not be all visible due to space limitations. However, a panel is provided following each graph with specific county totals.

	18-35	36-49	50-64	65+		18-35	36-49	50-64	65+
Alameda	23.1%	21.4%	27.5%	28.0%	Orange	24.9%	17.1%	27.4%	30.6%
Alpine	7.7%	10.5%	35.9%	45.9%	Placer	13.5%	15.2%	27.5%	43.8%
Amador	6.5%	7.4%	27.1%	59.1%	Plumas	8.7%	8.2%	29.7%	53.4%
Butte	21.5%	14.9%	25.5%	38.1%	Riverside	20.3%	15.9%	28.3%	35.5%
Calaveras	8.3%	7.4%	29.6%	54.6%	Sacramento	19.6%	18.2%	29.2%	33.0%
Colusa	21.1%	13.0%	26.5%	39.4%	San Benito	19.2%	17.0%	31.7%	32.1%
Contra Costa	16.6%	17.6%	30.7%	35.0%	San Bernardino	22.9%	16.7%	29.6%	30.8%
Del Norte	10.9%	11.2%	30.5%	47.3%	San Diego	22.6%	19.3%	27.8%	30.3%
El Colorado	11.7%	13.0%	32.7%	42.6%	San Francisco	28.3%	23.4%	24.4%	23.9%
Fresno	21.7%	15.7%	27.0%	35.6%	San Joaquin	19.0%	17.0%	29.3%	34.7%
Glenn	15.1%	11.3%	26.5%	47.1%	San Luis Obispo	17.6%	13.3%	28.0%	41.1%
Humboldt	20.2%	18.5%	26.4%	35.0%	San Mateo	18.5%	19.2%	29.7%	32.6%
Imperial	19.8%	16.0%	29.7%	34.5%	Santa Barbara	25.5%	14.1%	26.3%	34.0%
Inyo	10.7%	12.0%	31.4%	45.9%	Santa Clara	21.7%	19.0%	29.1%	30.2%
Kern	21.9%	15.4%	27.9%	34.8%	Santa Cruz	22.2%	17.5%	29.4%	30.9%
Kings	17.6%	14.9%	27.6%	40.0%	Shasta	11.1%	10.0%	28.7%	50.2%
Lake	9.2%	10.4%	29.7%	50.7%	Sierra	7.3%	9.6%	27.8%	55.3%
Lassen	7.2%	9.4%	29.7%	53.7%	Sisilyou	10.5%	10.1%	28.0%	51.3%
Los Angeles	25.1%	20.0%	27.4%	27.5%	Solano	16.8%	14.9%	32.0%	36.4%
Madera	16.7%	12.4%	26.7%	44.3%	Sonoma	15.6%	15.0%	30.1%	39.3%
Marin	11.8%	17.2%	32.2%	38.8%	Stanislaus	20.6%	16.3%	27.1%	36.0%
Mariposa	9.3%	10.0%	31.6%	49.1%	Sutter	17.7%	16.5%	27.2%	38.6%
Mendocino	13.0%	14.1%	27.0%	45.9%	Tehama	10.7%	8.7%	28.4%	52.2%
Merced	24.9%	15.6%	26.1%	33.4%	Trinity	9.2%	11.0%	28.4%	51.5%
Modoc	5.5%	7.8%	26.1%	60.6%	Tulare	21.0%	15.3%	26.1%	37.6%
Mono	16.1%	18.3%	33.5%	32.1%	Tuolumne	8.4%	8.2%	28.3%	55.1%
Monterey	20.3%	16.0%	28.8%	34.9%	Ventura	21.2%	16.6%	29.5%	32.7%
Napa	15.7%	16.4%	28.9%	38.9%	Yolo	24.8%	17.8%	27.5%	29.9%
Nevada	14.1%	15.8%	29.1%	40.9%	Yuba	16.9%	14.6%	30.6%	37.8%

Republicans turnout is greater with the 65+, and 50-64 groups, and it decreases substantially for the 36-49 and 18-35 groups. The Republican Party has a wider generational gap than the Democrats.

2016 Voting Participation Rate For Republicans



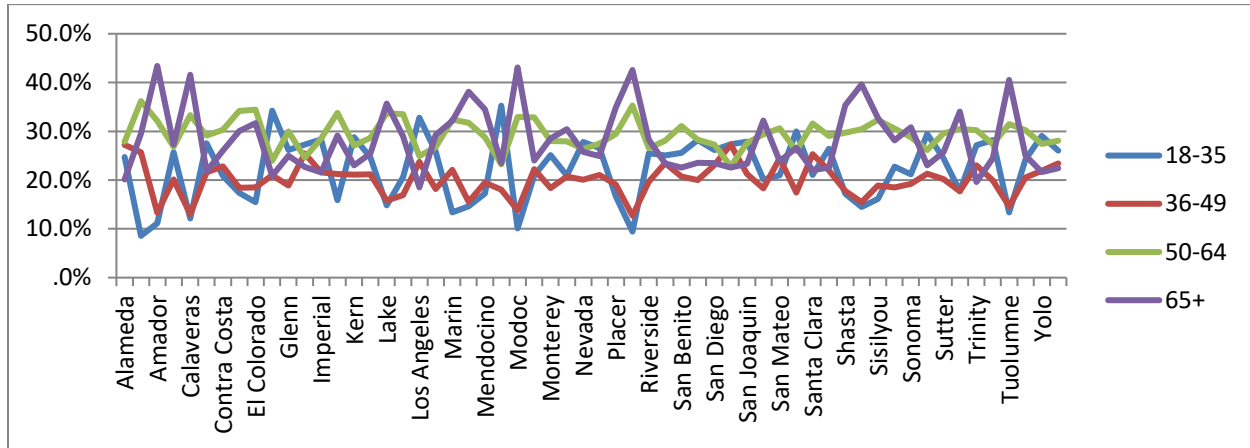
NOTE: The counties in the graphs, of this analysis, will not be all visible due to space limitations.

However, a panel is provided following each graph with specific county totals.

	18-35	36-49	50-64	65+		18-35	36-49	50-64	65+
Alameda	7.9%	13.3%	35.9%	42.9%	Orange	9.0%	13.1%	34.4%	43.5%
Alpine	4.3%	11.2%	32.9%	51.6%	Placer	8.0%	13.9%	33.0%	45.1%
Amador	6.1%	10.5%	30.7%	52.7%	Plumas	5.3%	8.8%	30.2%	55.7%
Butte	8.5%	12.2%	30.7%	48.6%	Riverside	9.3%	13.8%	31.9%	45.0%
Calaveras	6.3%	9.4%	32.4%	52.0%	Sacramento	8.9%	14.5%	34.3%	42.2%
Colusa	11.7%	13.3%	35.8%	39.3%	San Benito	9.1%	14.5%	38.5%	37.9%
Contra Costa	6.8%	12.1%	34.0%	47.1%	San Bernardino	10.7%	14.4%	36.0%	38.9%
Del Norte	6.3%	11.1%	35.4%	47.1%	San Diego	8.7%	13.7%	35.0%	42.6%
El Colorado	7.4%	12.6%	36.9%	43.1%	San Francisco	11.7%	15.0%	27.0%	46.4%
Fresno	11.0%	15.8%	32.7%	40.5%	San Joaquin	9.7%	14.4%	34.2%	41.7%
Glenn	9.8%	13.4%	32.9%	44.0%	San Luis Obispo	8.7%	11.3%	32.9%	47.1%
Humboldt	7.1%	11.3%	31.6%	50.0%	San Mateo	6.6%	12.0%	32.0%	49.4%
Imperial	11.0%	15.2%	35.1%	38.7%	Santa Barbara	8.5%	10.5%	32.6%	48.3%
Inyo	6.0%	10.1%	30.9%	53.0%	Santa Clara	7.9%	13.3%	35.0%	43.8%
Kern	11.3%	15.4%	34.9%	38.4%	Santa Cruz	6.8%	10.9%	33.3%	49.0%
Kings	13.5%	17.4%	34.0%	35.1%	Shasta	7.8%	12.0%	32.1%	48.1%
Lake	5.5%	9.8%	31.6%	53.2%	Sierra	6.5%	12.1%	31.4%	50.0%
Lassen	11.0%	16.2%	36.2%	36.7%	Sisilyou	7.5%	12.4%	31.6%	48.6%
Los Angeles	9.6%	13.5%	33.5%	43.4%	Solano	8.1%	12.8%	36.4%	42.7%
Madera	9.4%	12.6%	31.5%	46.4%	Sonoma	7.0%	10.5%	32.6%	49.9%
Marin	4.8%	10.2%	30.5%	54.5%	Stanislaus	11.6%	15.6%	33.6%	39.2%
Mariposa	7.3%	9.0%	32.6%	51.1%	Sutter	9.8%	14.5%	33.6%	42.1%
Mendocino	6.6%	10.9%	31.7%	50.8%	Tehama	7.4%	12.2%	32.9%	47.4%
Merced	12.2%	15.1%	32.9%	39.8%	Trinity	5.2%	10.3%	32.4%	52.2%
Modoc	7.9%	10.5%	29.6%	52.1%	Tulare	11.7%	14.6%	32.9%	40.8%
Mono	6.2%	11.2%	38.0%	44.6%	Tuolumne	6.8%	9.2%	30.4%	53.6%
Monterey	7.4%	11.2%	32.7%	48.7%	Ventura	8.7%	12.4%	35.5%	43.4%
Napa	6.9%	11.6%	31.7%	49.8%	Yolo	10.1%	14.3%	34.2%	41.4%
Nevada	6.2%	9.6%	30.8%	53.4%	Yuba	11.4%	17.0%	35.4%	36.2%

The Non-Partisan Turnout is closer between the age groups and generally even throughout the groups.

2016 Voting Participation Rate For Non-Partisans



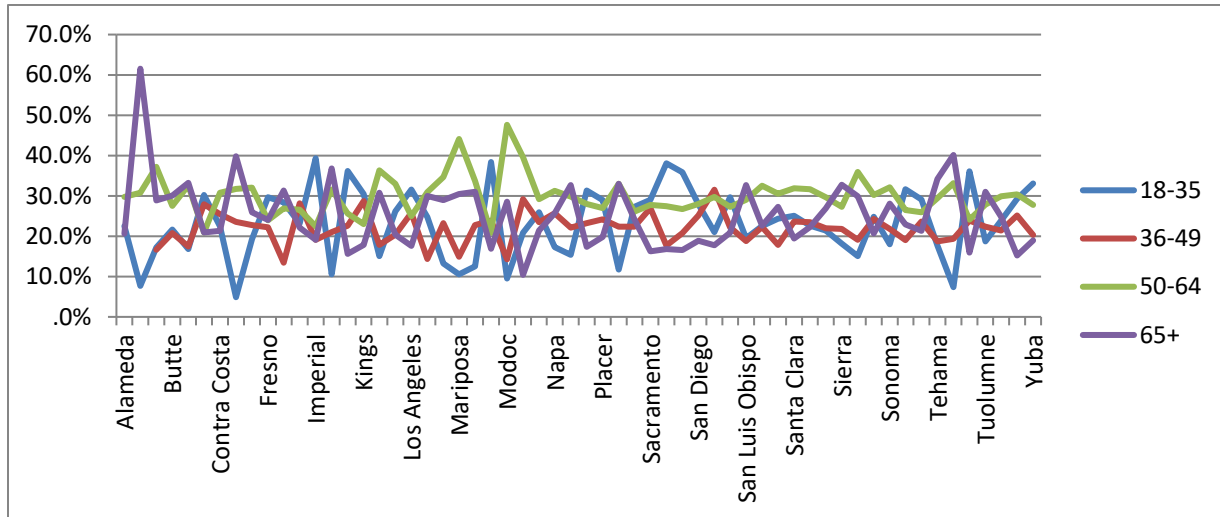
NOTE: The counties in the graphs, of this analysis, will not be all visible due to space limitations.

However, a panel is provided following each graph with specific county totals.

	18-35	36-49	50-64	65+		18-35	36-49	50-64	65+
Alameda	24.7%	27.2%	27.9%	20.2%	Orange	26.6%	21.1%	27.5%	24.9%
Alpine	8.6%	25.7%	36.2%	29.5%	Placer	16.6%	19.1%	29.4%	34.9%
Amador	11.1%	13.3%	32.1%	43.4%	Plumas	9.5%	12.7%	35.3%	42.6%
Butte	25.7%	20.2%	26.8%	27.3%	Riverside	25.5%	19.7%	26.6%	28.3%
Calaveras	12.2%	13.0%	33.3%	41.6%	Sacramento	25.0%	23.5%	28.1%	23.4%
Colusa	27.5%	21.6%	29.1%	21.8%	San Benito	25.6%	20.7%	31.1%	22.6%
Contra Costa	20.8%	22.8%	30.3%	26.1%	San Bernardino	28.2%	20.0%	28.3%	23.5%
Del Norte	17.4%	18.5%	34.2%	30.0%	San Diego	26.2%	23.1%	27.3%	23.5%
El Colorado	15.5%	18.5%	34.4%	31.7%	San Francisco	27.3%	27.3%	22.8%	22.6%
Fresno	34.3%	21.0%	23.9%	20.8%	San Joaquin	27.8%	21.2%	27.6%	23.3%
Glenn	26.2%	18.9%	30.0%	25.0%	San Luis Obispo	20.1%	18.3%	29.4%	32.2%
Humboldt	27.3%	25.4%	24.6%	22.7%	San Mateo	21.0%	24.4%	30.7%	23.9%
Imperial	28.3%	21.6%	28.5%	21.6%	Santa Barbara	30.0%	17.4%	26.0%	26.6%
Inyo	15.9%	21.3%	33.8%	29.1%	Santa Clara	21.0%	25.3%	31.6%	22.0%
Kern	28.8%	21.1%	27.1%	23.0%	Santa Cruz	26.4%	22.0%	29.0%	22.5%
Kings	24.7%	21.2%	28.6%	25.5%	Shasta	17.2%	17.7%	29.7%	35.4%
Lake	14.8%	15.8%	33.7%	35.7%	Sierra	14.5%	15.5%	30.4%	39.6%
Lassen	20.6%	16.9%	33.5%	29.0%	Sisilyou	16.1%	18.9%	32.3%	32.7%
Los Angeles	32.8%	23.8%	24.9%	18.5%	Solano	22.7%	18.5%	30.6%	28.2%
Madera	25.8%	18.2%	26.7%	29.2%	Sonoma	21.2%	19.2%	28.8%	30.8%
Marin	13.4%	22.1%	32.4%	32.1%	Stanislaus	29.5%	21.3%	26.1%	23.0%
Mariposa	14.6%	15.5%	31.7%	38.1%	Sutter	24.5%	20.2%	29.6%	25.7%
Mendocino	17.2%	19.5%	28.8%	34.5%	Tehama	17.7%	17.7%	30.5%	34.0%
Merced	35.3%	18.0%	23.2%	23.5%	Trinity	27.1%	23.0%	30.2%	19.6%
Modoc	10.1%	13.9%	33.0%	43.1%	Tulare	28.2%	20.0%	27.3%	24.5%
Mono	20.9%	22.2%	32.8%	24.0%	Tuolumne	13.4%	14.6%	31.5%	40.5%
Monterey	25.1%	18.3%	28.0%	28.5%	Ventura	24.2%	20.5%	30.2%	25.0%
Napa	20.9%	20.7%	27.9%	30.4%	Yolo	29.0%	21.9%	27.4%	21.6%
Nevada	27.8%	20.1%	26.3%	25.8%	Yuba	26.0%	23.4%	28.1%	22.5%

The other political parties had a combined turnout rate of 2.1%, in 2016, and is 2.6% for 2017, so far. Their turnout is more dependent in the particular philosophy of their party.

2016 Voting Participation Rate For Other Political Parties



NOTE: The counties in the graphs, of this analysis, will not be all visible due to space limitations. However, a panel is provided following each graph with specific county totals.

	18-35	36-49	50-64	65+		18-35	36-49	50-64	65+
Alameda	22.5%	27.2%	29.7%	20.6%	Orange	31.3%	23.3%	28.0%	17.4%
Alpine	7.7%		30.8%	61.5%	Placer	29.0%	24.2%	27.0%	19.8%
Amador	17.2%	16.7%	37.2%	28.9%	Plumas	11.7%	22.3%	33.0%	33.0%
Butte	21.7%	20.8%	27.5%	30.0%	Riverside	27.3%	22.4%	26.1%	24.2%
Calaveras	16.8%	17.4%	32.6%	33.2%	Sacramento	29.0%	26.9%	27.8%	16.2%
Colusa	30.2%	27.9%	20.9%	20.9%	San Benito	38.1%	17.7%	27.4%	16.8%
Contra Costa	22.4%	25.5%	30.8%	21.3%	San Bernardino	35.9%	20.8%	26.7%	16.6%
Del Norte	4.9%	23.6%	31.7%	39.8%	San Diego	27.9%	25.2%	28.0%	18.9%
El Colorado	19.3%	22.7%	32.1%	25.9%	San Francisco	21.0%	31.5%	29.7%	17.7%
Fresno	29.7%	22.2%	24.0%	24.1%	San Joaquin	29.7%	22.2%	27.3%	20.8%
Glenn	28.4%	13.4%	26.9%	31.3%	San Luis Obispo	19.5%	18.8%	29.0%	32.6%
Humboldt	23.1%	28.2%	26.5%	22.1%	San Mateo	22.5%	22.3%	32.6%	22.6%
Imperial	39.3%	19.1%	22.5%	19.1%	Santa Barbara	24.4%	17.8%	30.5%	27.3%
Inyo	10.5%	21.1%	31.6%	36.8%	Santa Clara	25.0%	23.6%	31.9%	19.5%
Kern	36.2%	22.6%	25.6%	15.6%	Santa Cruz	22.6%	23.5%	31.7%	22.3%
Kings	30.5%	28.7%	23.0%	17.8%	Shasta	21.5%	21.9%	29.7%	26.9%
Lake	15.1%	17.8%	36.3%	30.8%	Sierra	18.2%	21.8%	27.3%	32.7%
Lassen	26.2%	20.4%	33.0%	20.4%	Sisilyou	15.1%	19.1%	35.9%	29.9%
Los Angeles	31.6%	25.8%	25.0%	17.6%	Solano	24.8%	24.3%	30.3%	20.7%
Madera	24.8%	14.3%	30.9%	30.0%	Sonoma	18.0%	21.8%	32.1%	28.1%
Marin	13.2%	23.2%	34.6%	28.9%	Stanislaus	31.6%	19.0%	26.5%	22.9%
Mariposa	10.6%	14.9%	44.1%	30.4%	Sutter	29.1%	23.6%	25.9%	21.3%
Mendocino	12.5%	22.7%	33.7%	31.0%	Tehama	17.6%	18.7%	29.4%	34.2%
Merced	38.4%	23.9%	20.8%	16.9%	Trinity	7.4%	19.3%	33.1%	40.2%
Modoc	9.5%	14.3%	47.6%	28.6%	Tulare	36.1%	23.9%	24.1%	15.9%
Mono	20.8%	29.2%	39.6%	10.4%	Tuolumne	18.7%	22.4%	27.9%	31.1%
Monterey	25.9%	23.5%	29.2%	21.4%	Ventura	23.9%	21.5%	29.9%	24.8%
Napa	17.3%	25.7%	31.2%	25.7%	Yolo	29.3%	25.2%	30.4%	15.2%
Nevada	15.4%	22.1%	29.8%	32.7%	Yuba	33.0%	20.3%	27.8%	18.9%